

SUBMITTAL DATA: MXZ-3A30NA
MULTI-INDOOR INVERTER HEAT-PUMP SYSTEM

Job Name: _____ Location: _____ Date: _____

Purchaser: _____ Engineer: _____

Submitted to: _____ For Reference Approval Construction

Unit Designation: _____ Schedule No.: _____

GENERAL FEATURES

- Compact side discharge outdoor unit
- Wireless or wired remote controller, depending on the indoor units used
- Quiet operation—both indoor and outdoor units
- Automatic fan speed control
- Auto restart following a power outage
- Self-check function—integrated diagnostics
- Advanced microprocessor control
- Limited warranty: one year on parts and defects and six years on compressor



Outdoor Unit: MXZ-3A30NA

OPTIONAL OUTDOOR UNIT ACCESSORY

- Air Outlet Guide (MAC-855SG)

Cooling*

Rated Capacity (Non-ducted/Ducted) . . . 28,400 Btu/h / 27,400 Btu/h
 Minimum Capacity (Non-ducted/Ducted) . . 12,600 Btu/h / 12,600 Btu/h
 Total Input (Non-ducted/Ducted) 3,250 W / 3,300 W

Heating at 47°F*

Rated Capacity (Non-ducted/Ducted) . . . 28,600 Btu/h / 27,600 Btu/h
 Minimum Capacity (Non-ducted/Ducted) . . 11,400 Btu/h / 11,400 Btu/h
 Total Input (Non-ducted/Ducted) 2,180 W / 2,220 W

Heating at 17°F*

Rated Capacity (Non-ducted/Ducted) . . . 16,000 Btu/h / 15,100 Btu/h
 Total Input (Non-ducted/Ducted) 1,690 W / 1,590 W

* Rating Conditions (Cooling) - Indoor: 80°F (27°C) DB / 67°F (19°C) WB.

Outdoor: 95°F (35°C) DB / 75°F (24°C) WB.

(Heating) - Indoor: 70°F (21°C) DB / 60°F (16°C) WB. Outdoor: 47°F (8°C) DB / 43°F (6°C) WB.

(Heating at 17°F) - Indoor: 70°F (21°C) DB / 60°F (16°C) WB. Outdoor: 17°F (-8°C) DB / 15°F (-9°C) WB.

(For data on specific indoor units [all ducted, all non-ducted, and both ducted and non-ducted] combinations, see the MXZ Technical and Service Manual.)

Electrical Requirements

Power Supply 208 / 230V, 1-Phase, 60 Hz
 Breaker Size 20 A
 MCA 15 A

Voltage

Indoor - Outdoor S1-S2 AC 208 / 230V
 Indoor - Outdoor S2-S3 DC 12 - 24V

OPERATING RANGE

		Indoor Intake Air Temp.		Outdoor Intake Air Temp.
Cooling	Maximum	95°F (35°C) DB, 71°F (22°C) WB		115°F (46°C) DB
	Minimum	67°F (19°C) DB, 57°F (14°C) WB		14°F (-10°C) DB
Heating	Maximum	80°F (27°C) DB, 67°F (19°C) WB		75°F (24°C) DB, 65°F (18°C) WB
	Minimum	70°F (21°C) DB, 60°F (16°C) WB		14°F (-10°C) DB, 12°F (-11°C) WB

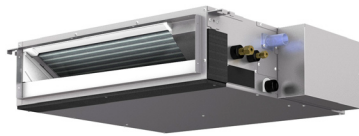
Compressor DC Inverter-driven Twin Rotary
 Fan Motor 0.93 F.L.A.

Sound Pressure Level

Cooling 49 dB(A)
 Heating 49 dB(A)

DIMENSIONS	INCHES / MM
W	35-7/16 / 900
D	12-5/8 / 320
H	35-7/16 / 900

Weight 148 lbs. / 67 kg
 Refrigerant Type R410A
 Refrigerant Pipe Size O.D. — Three Ports
 Gas Side A: 1/2 / 12.7 mm; B, C: 3/8" / 9.52 mm
 Liquid Side 1/4" / 6.35 mm
 Max. Refrigerant Pipe Length 230' / 70 m
 Max. Refrigerant Pipe Height Difference
 If Indoor Unit is Above Outdoor Unit 49' / 15 m
 If Indoor Unit is Below Outdoor Unit 33' / 10 m
 Connection Method Flared

COMPATIBLE INDOOR UNITS AND ASSOCIATED REMOTE CONTROLLERS
Horizontal-ducted Indoor Units: SEZ-KD09, 12, 15, 18NA

Wall-mounted Indoor Units: MSZ-A09, 12, 15, 17, 24NA

Wall-mounted Indoor Units: MSZ-FD09, 12NA


Wireless Remote Controller -
 Packaged with MSZ-A and MSZ-FD
 (Optional Wired PAR-21MAA Remote
 Controller)

MXZ-3A30NA ENERGY EFFICIENCIES

Indoor Unit Type	SEER	HSPF
Non-ducted	16	10
Ducted and Non-ducted	15.2	9.7
Ducted	14.5	9.5

SYSTEM COMPONENTS

Outdoor Unit MXZ-3A30NA
 Indoor Unit Two (minimum) or Three Indoor Units Necessary
 (Select Style as Installation Requires)

Refer to the separate submittal forms for the SEZ and MSZ Indoor Units.



MXZ-3A30NA COMBINATIONS* (with wall-mounted and/or ducted indoor units)

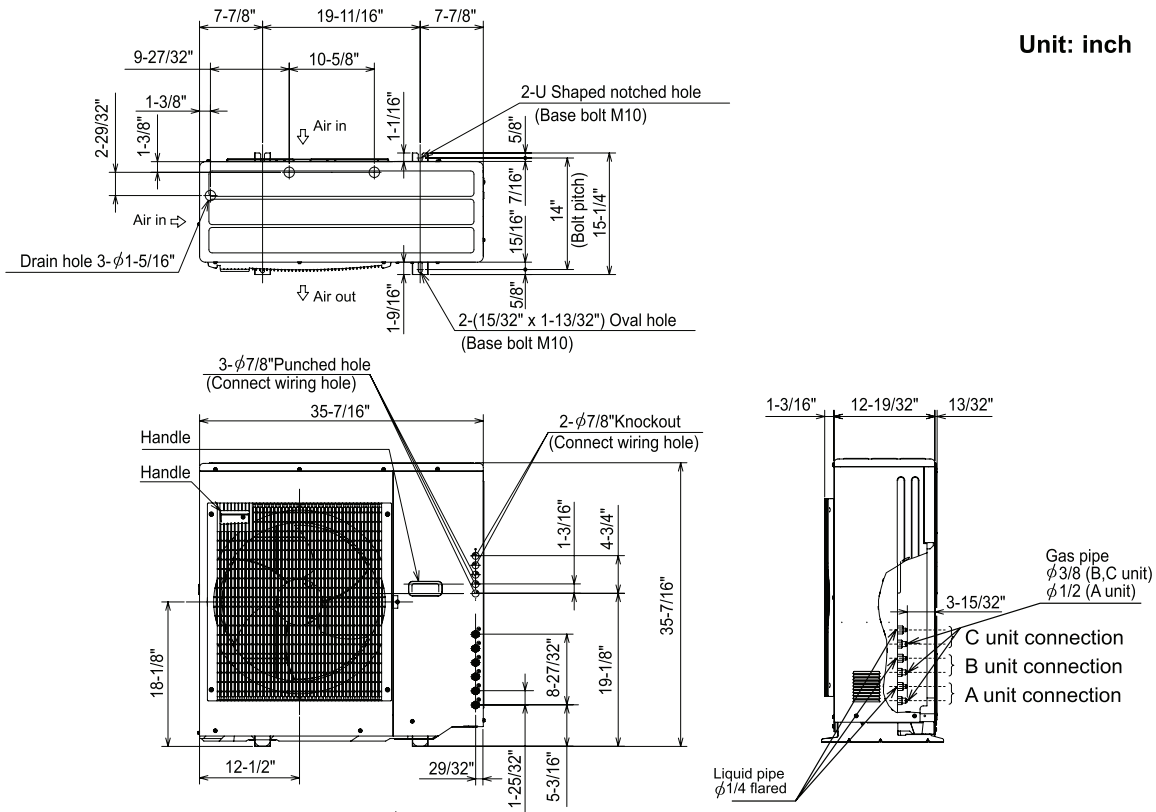
Indoor Unit (Unit A + Unit B + Unit C) Combinations **	Cooling Capacity (Btu/h)				Power Usage (W)	
	Heating Capacity (Btu/h)					
	Unit A	Unit B	Unit C	Total		
9 + 9	9,000	9,000	-	18,000	1,800 - 1,840	
	10,900	10,900	-	21,800	1,700	
9 + 12	9,000	12,000	-	21,000	2,000 - 2,040	
	10,900	13,600	-	24,500	1,980	
9 + 15	9,000	15,000	-	24,000	2,500 - 2,540	
	10,100	16,900	-	27,000	2,200	
9 + 17	9,000	16,200	-	25,200	2,700 - 2,720	
	9,300	17,700	-	27,000	2,200	
9 + 18	8,900	17,100	-	26,000	2,820 - 2,840	
	9,000	18,000	-	27,000	2,200	
9 + 24	7,600	20,400	-	28,000	3,200 - 3,220	
	7,300	19,700	-	27,000	1,980	
12 + 12	12,000	12,000	-	24,000	2,500 - 2,540	
	13,500	13,500	-	27,000	2,200	
12 + 15	11,500	14,500	-	26,000 27,000	2,800 - 2,840	
	12,000	15,000	-		2,160	
12 + 17	10,800	15,200	-		2,800 - 2,820	
	11,200	15,800	-		2,140	
12 + 18	10,400	15,600	-		2,820 - 2,840	
	10,800	16,200	-		2,140	
15 + 15	13,000	13,000	-		2,800 - 2,840	
	13,500	13,500	-		2,120	
15 + 17	12,200	13,800	-		2,800 - 2,820	
	12,700	14,300	-		2,110	
15 + 18	11,800	14,200	-		2,820 - 2,840	
	12,300	14,700	-		2,110	
17 + 17	13,000	13,000	-		2,800	
	13,500	13,500	-		2,100	
17 + 18	12,600	13,400	-		2,820	
	13,100	13,900	-		2,100	
18 + 18	13,000	13,000	-		2,840	
	13,500	13,500	-		2,100	
9 + 9 + 9	Wall: 9,000 Ducted: 8,500	Wall: 9,000 Ducted: 8,500	Wall: 9,000 Ducted: 8,500		27,000 (All Wall-mounted MSZ) 25,500 (All Ducted SEZ) 26,500 - 26,000 (Combination)	2,860 - 2,950
	Wall: 9,500 Ducted: 9,000	Wall: 9,500 Ducted: 9,000	Wall: 9,500 Ducted: 9,000		28,500 (All Wall-mounted MSZ) 27,000 (All Ducted SEZ) 28,000 - 27,500 (Combination)	2,180 - 2,240
9 + 9 + 12	Wall: 8,500 Ducted: 8,000	Wall: 8,500 Ducted: 8,000	11,400	28,400 (All Wall-mounted MSZ) 27,400 (All Ducted SEZ) 28,400 - 27,400 (Combination)	3,250 - 3,330	
	Wall: 8,600 Ducted: 8,100	Wall: 8,600 Ducted: 8,100	11,400	28,600 (All Wall-mounted MSZ) 27,600 (All Ducted SEZ) 28,600 - 27,600 (Combination)	2,180 - 2,220	
9 + 9 + 15	Wall: 7,750 Ducted: 7,250	Wall: 7,750 Ducted: 7,250	12,900	28,400 (All Wall-mounted MSZ) 27,400 (All Ducted SEZ) 28,400 - 27,400 (Combination)	3,250 - 3,330	
	Wall: 7,800 Ducted: 7,300	Wall: 7,800 Ducted: 7,300	13,000	28,600 (All Wall-mounted MSZ) 27,600 (All Ducted SEZ) 28,600 - 27,600 (Combination)	2,180 - 2,200	
9 + 9 + 17	Wall: 7,300 Ducted: 6,800	Wall: 7,300 Ducted: 6,800	13,800	28,400 (All Wall-mounted MSZ) 27,400 (All Ducted SEZ) 27,900 (Combination)	3,250 - 3,310	
	Wall: 7,350 Ducted: 6,850	Wall: 7,350 Ducted: 6,850	13,900	28,600 (All Wall-mounted MSZ) 27,600 (All Ducted SEZ) 28,100 (Combination)	2,180 - 2,220	
9 + 9 + 18	Wall: 7,100 Ducted: 6,600	Wall: 7,100 Ducted: 6,600	14,200	28,400 (All Wall-mounted MSZ) 27,400 (All Ducted SEZ) 27,900 (Combination)	3,270 - 3,330	
	Wall: 7,200 Ducted: 6,700	Wall: 7,200 Ducted: 6,700	14,200	28,600 (All Wall-mounted MSZ) 27,600 (All Ducted SEZ) 28,100 (Combination)	2,180 - 2,220	

* Information provided at 208/230V. Refer to MXZ Outdoor Unit Service Manual for detail specification and additional information per indoor unit combination

** Sizes 17 and 24 only available in MSZ-A17 and MSZ-A24 wall-mounted indoor unit style, respectively. Size 18 only available in SEZ-KD18 ducted indoor unit style.

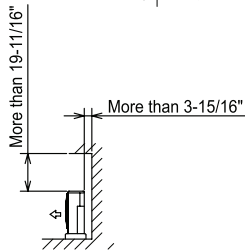
DIMENSIONS: MXZ-3A30NA

Unit: inch

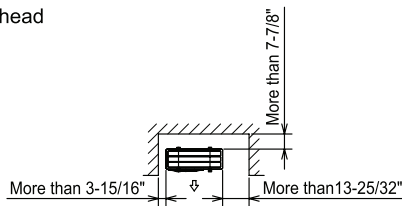


1. Installation space

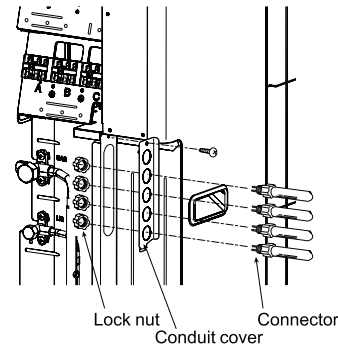
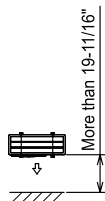
Note : Leave front and both sides clearance fully.



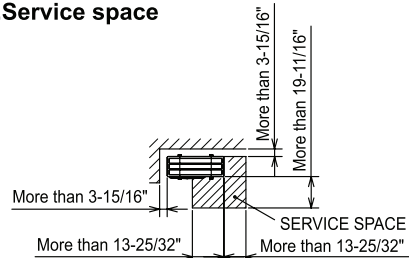
Note : Leave front and overhead clearance fully.



Note : Leave rear, overhead and both sides clearance fully.



2. Service space



HVAC Advanced Products Division
 3400 Lawrenceville Suwanee Rd
 Suwanee, GA 30024
 Tele: 678-376-2900 • Fax: 800-889-9904
 Toll Free: 800-433-4822 (#3)
 www.mehvac.com
Specifications are subject to change without notice.